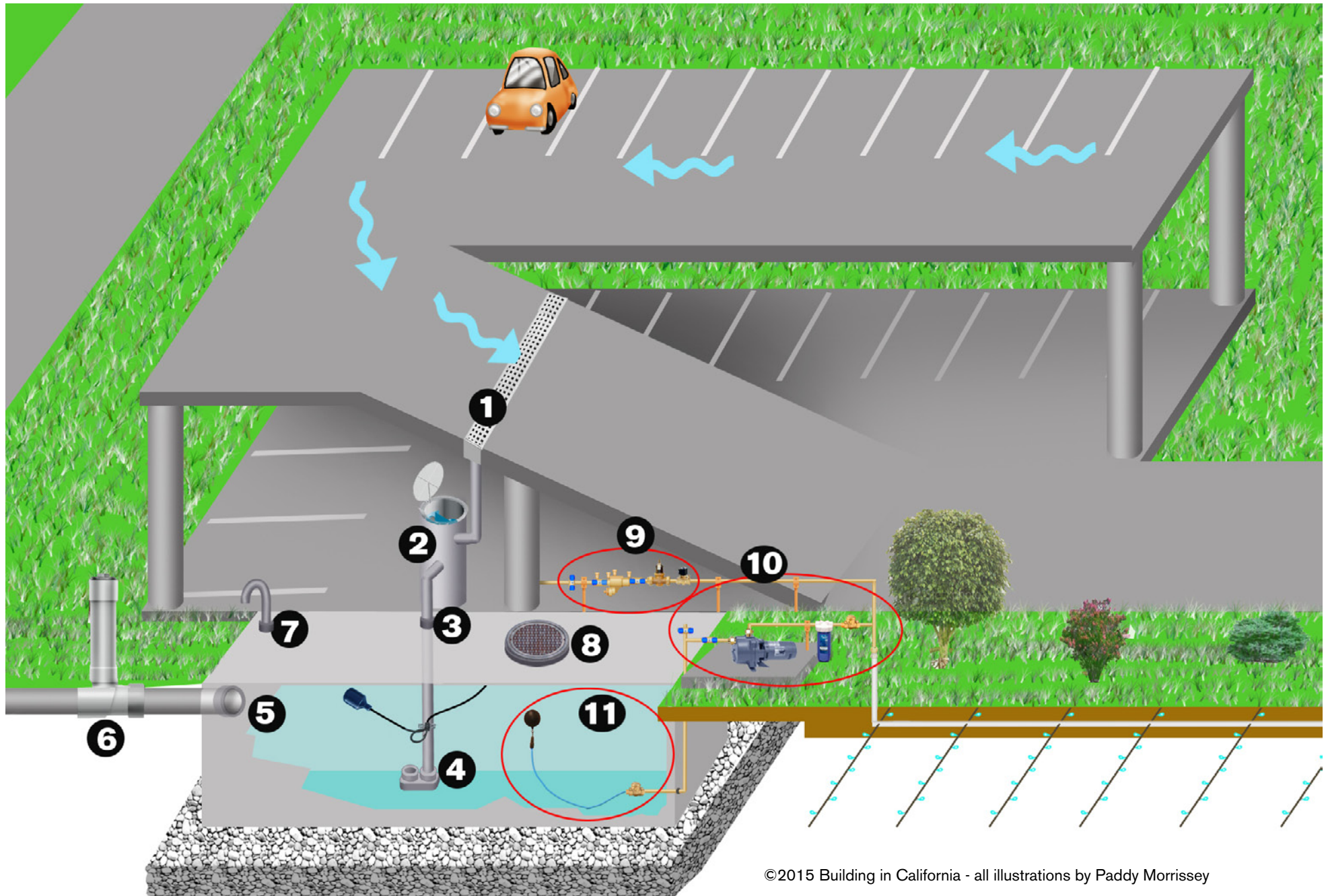
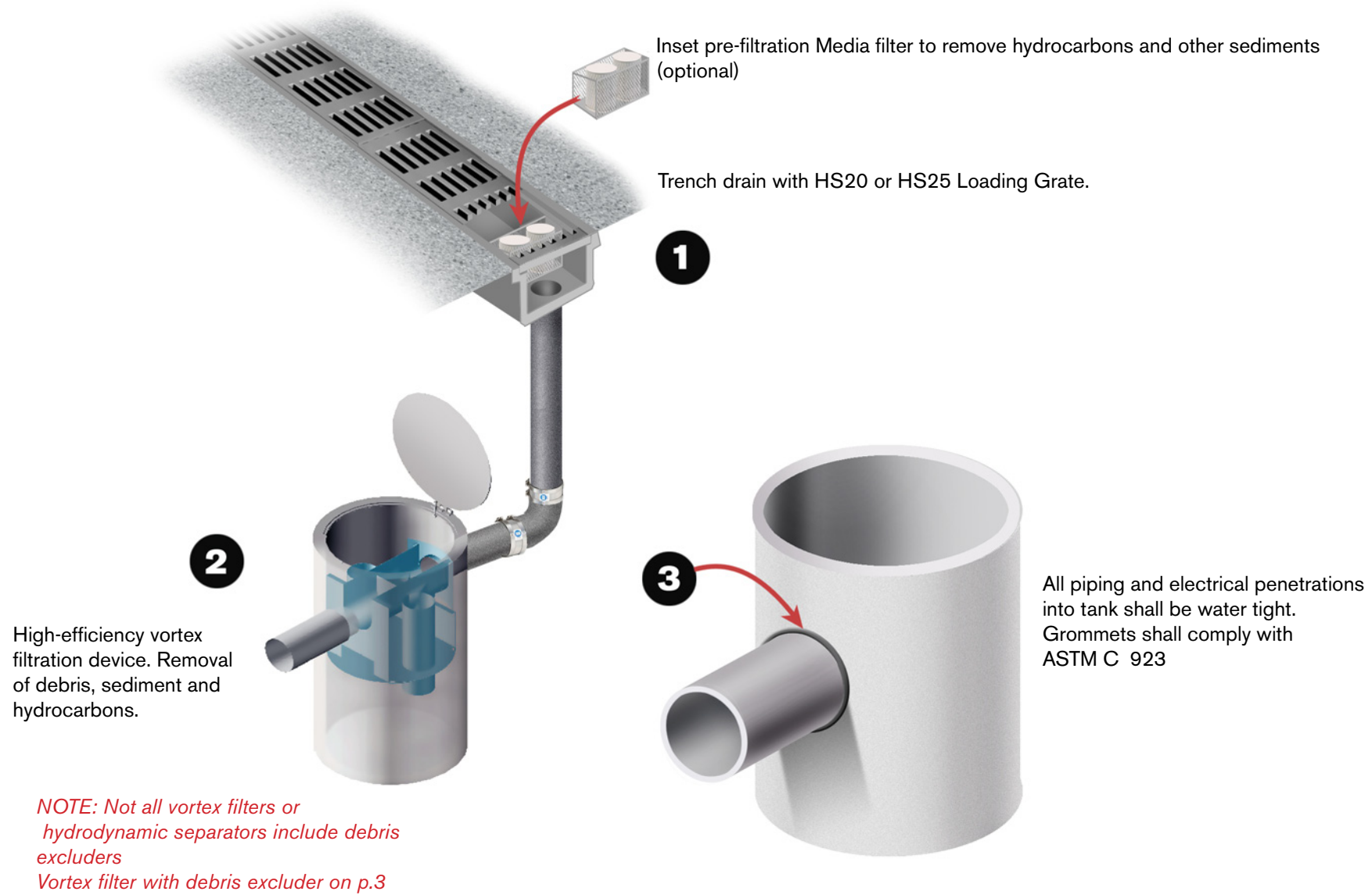




Stormwater Harvesting with Underground Concrete Tank for Landscape Subsoil Irrigation

Click number for expanded view of each item(s)





Trench drain for collection of stormwater with optional media filter

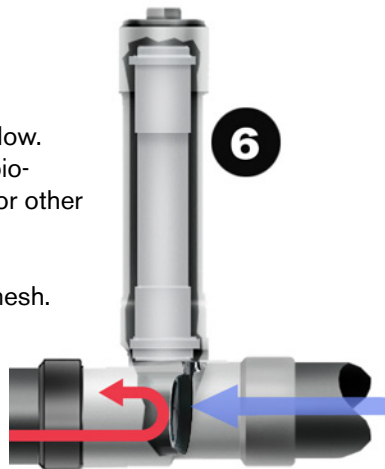
2A

Aboveground Vortex filter with debris excluder

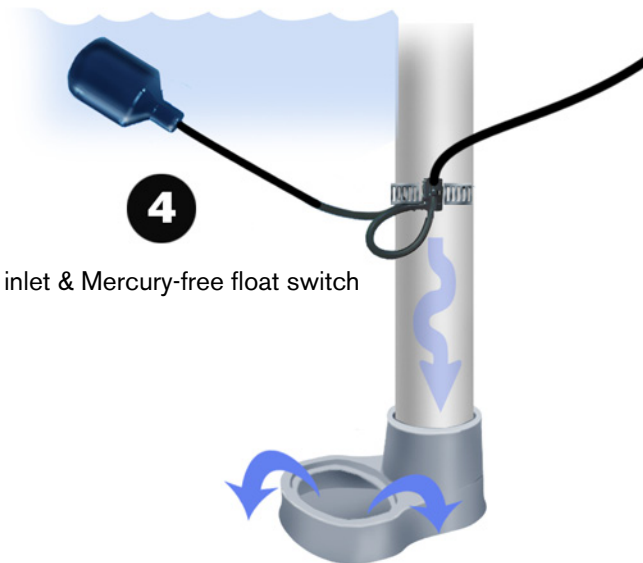
Debris excluder piping to terminate at landscape, bioswale, or other approved location.

To calming inlet of tank

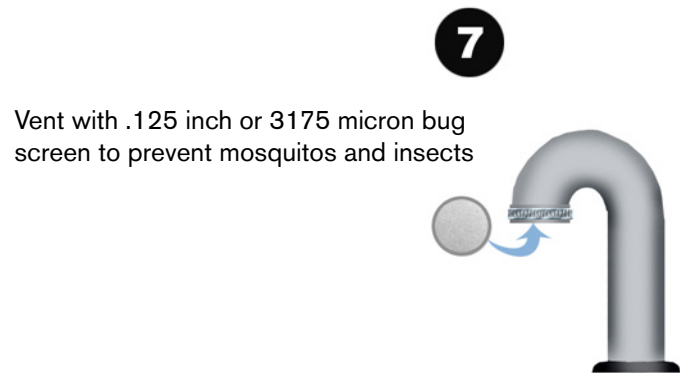
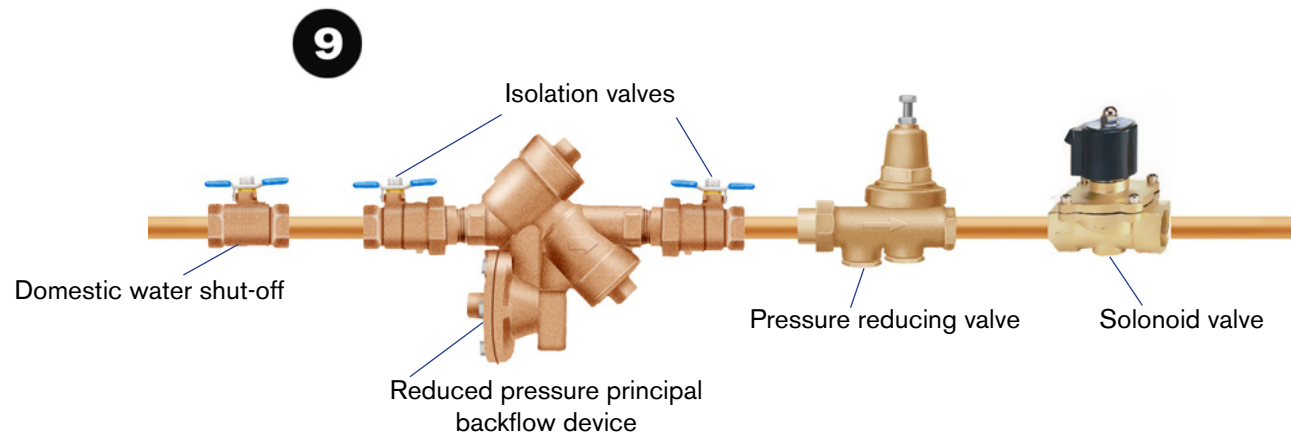
Backwater valve on tank overflow.
Overflow pipe discharges to bio-
swale, raingarden, infiltration, or other
approved location.
All exposed openings shall be
screened with 1/8in. screen mesh.

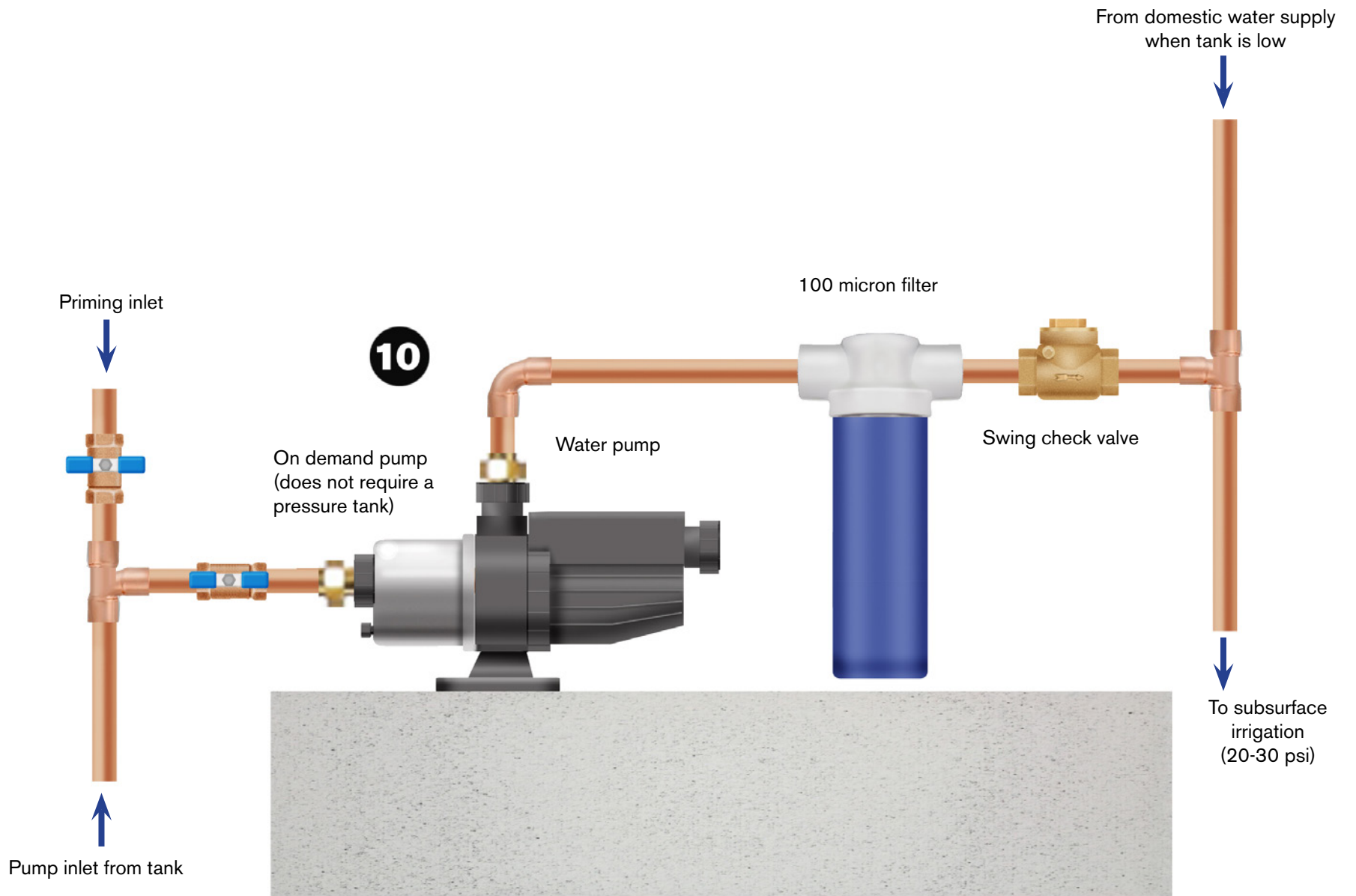


Grommet for water-tight
connection on overflow



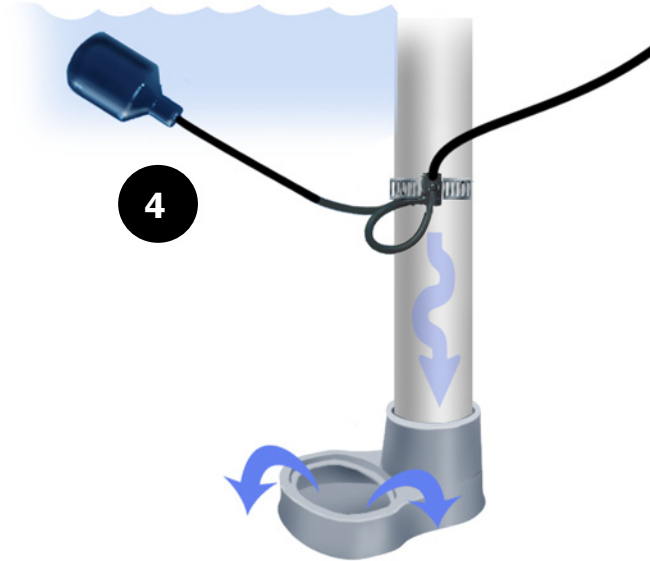
Calming inlet & Mercury-free float switch







Floating suction inlet with bronze check valve. Check valve acts as a foot valve to maintain prime at pump.
NOTE: Floating inlet not only device to accomplish drawing water from tank. Vertical piping may use foot valve and only requirement is water shall be drawn a minimum 4 in. from bottom of tank



Calming inlet and mercury-free float switch.

