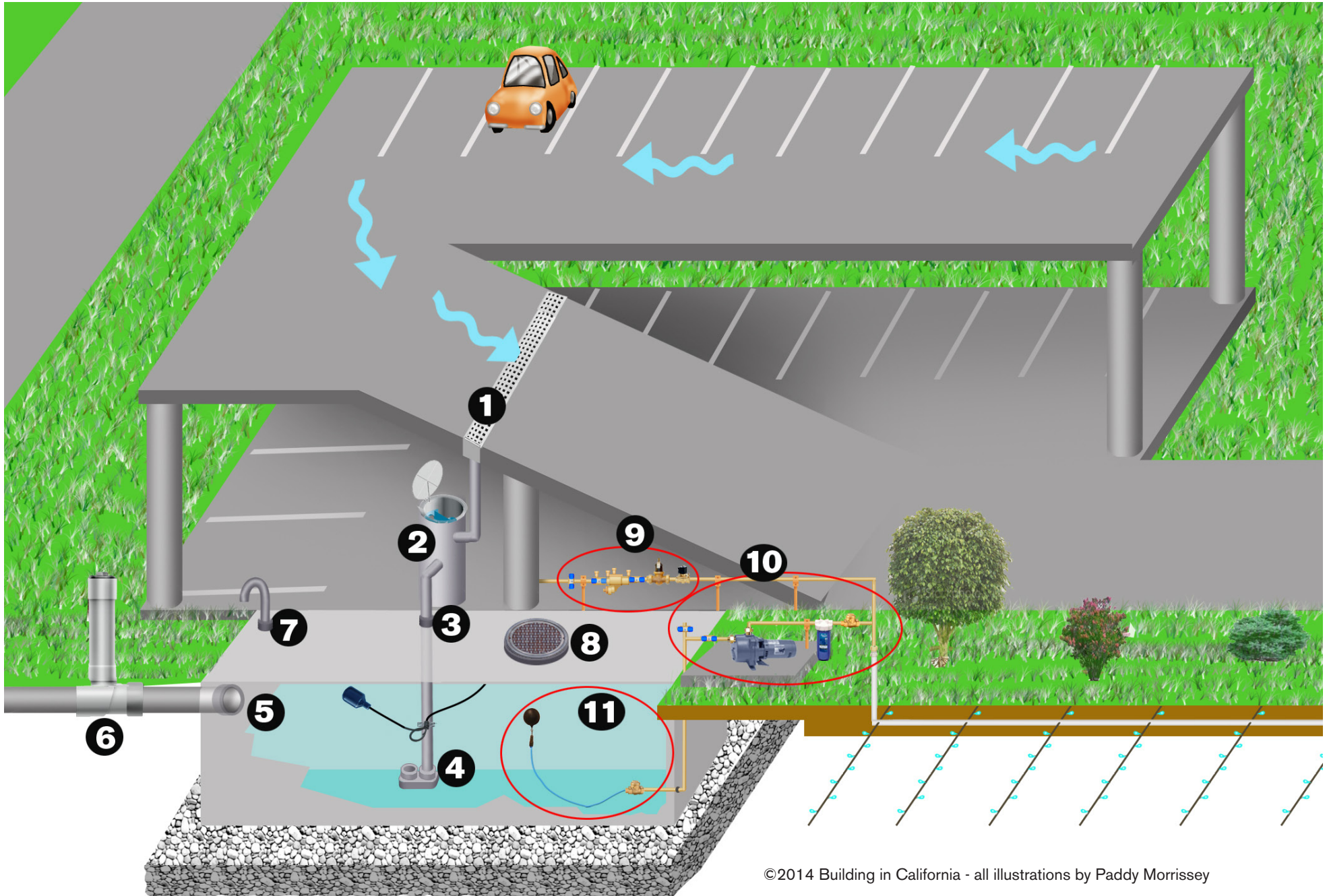
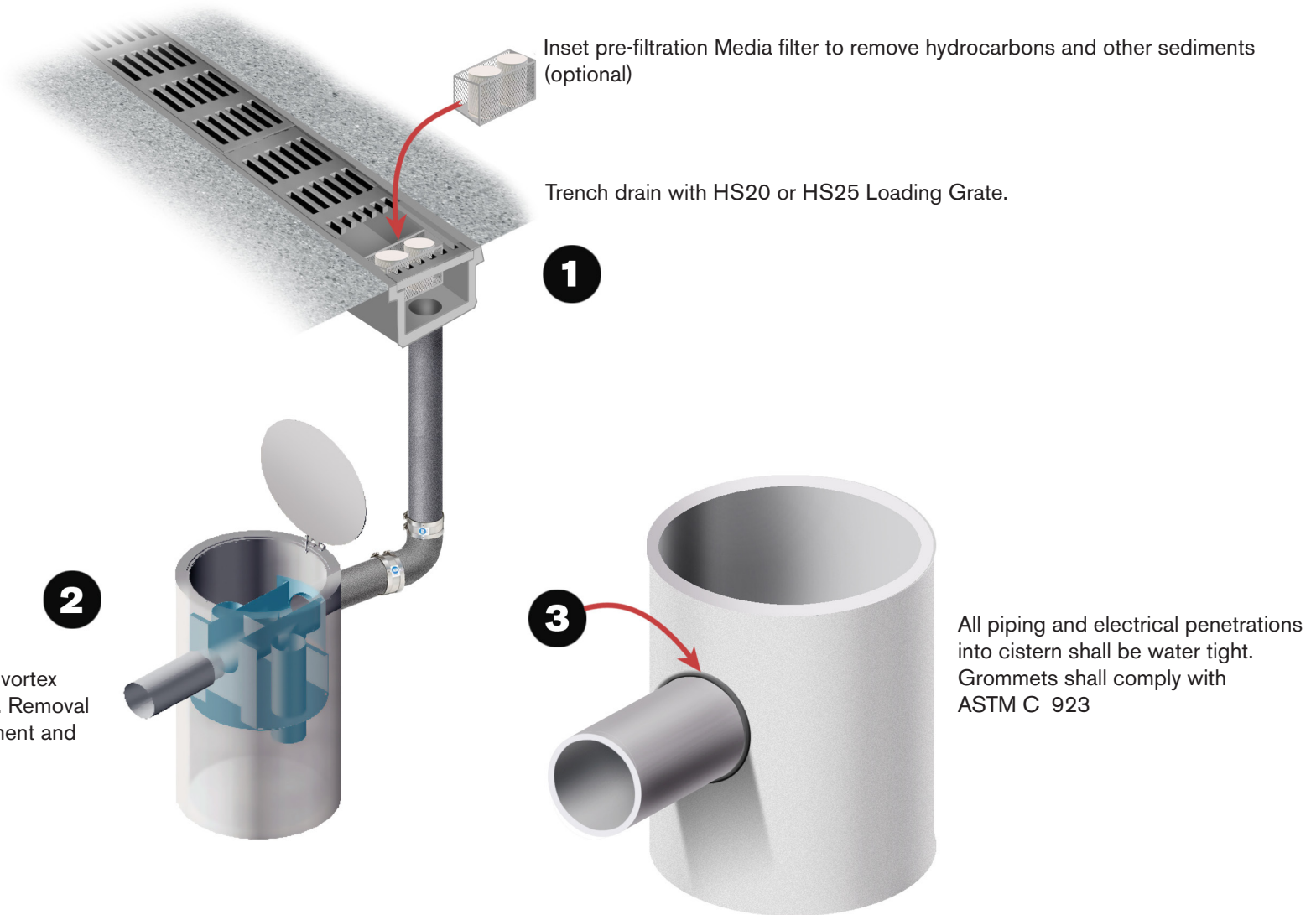




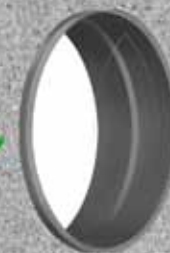
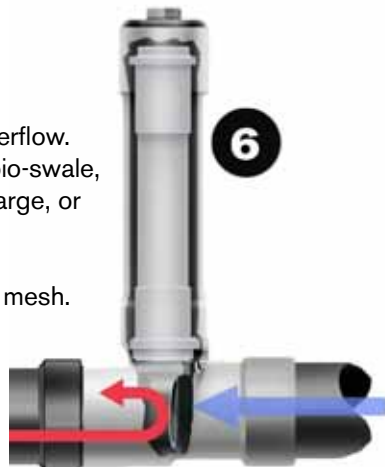
# Stormwater Harvesting with Underground Concrete Tank for Landscape Subsoil Irrigation

*Click number for expanded view of each item(s)*

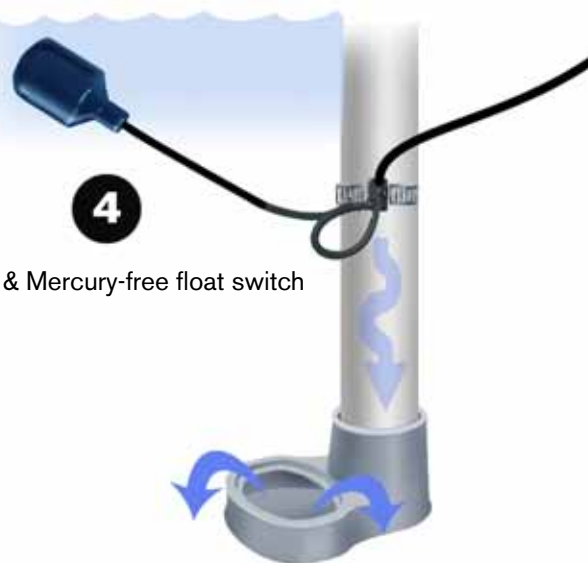




Backwater valve on cistern overflow.  
Overflow pipe discharges to bio-swale,  
raingarden, groundwater recharge, or  
other approved location.  
All exposed openings shall be  
screened with .125 in. screen mesh.



Grommet for water-tight  
connection on overflow



Calming inlet & Mercury-free float switch

